

AssistMyTeam OLAP Tool for SharePoint

Installation and Configuration

With this guide, you would be able to quickly install and easily configure AssistMyTeam OLAP Tool in your system, and quickly analyze your SharePoint list data in multiple dimensional views and get useful insights and sense out of your enormous relational data.

Download link: <https://www.assistmyteam.com/olap-for-sharepoint/download-setup/>

For 'Per User Installation' (*ideal for standalone single user/workstation*)

- OlapSharePointSetup.zip

For 'Per Machine Installation' (*ideal for installing on Citrix and Terminal Servers*)

- OlapSharePointSetup-Citrix.zip

Extract these file contents to a folder.

NOTE: 'Per User Installation' and 'Per Machine Installation'

In 'Per User Installation', the OLAP tool install is performed 100% on the local system and nothing is installed on your Exchange or Windows Server. Further, this install is intended to serve only the current logged on user of the system/workstation and will be installed under the user's application data folder (instead of Programs Files folder) and no elevated permission is required. So, there won't be a prompt from UAC to allow this install unless you change the install directory to say, Programs Files which will warrant an elevated permission/UAC prompt. If the same system is used by multiple users, each of them need to install the add-in on their profile with the default installation folder location.

'Per Machine Installation': If you have the need to have a single install that serves all users of the system (i.e., the files will be installed under Program files folder), download the Citrix/Terminal Server version of the setups to perform a per machine installation.

Requirements

To work with AssistMyTeam OLAP Statistics and Reporting tool for SharePoint, you would require the followings

Operating Systems

Windows 11, 10, Windows 8, Windows 7, Windows Vista, Windows Server (All Editions)

.NET Framework

4.8 or above.

SharePoint

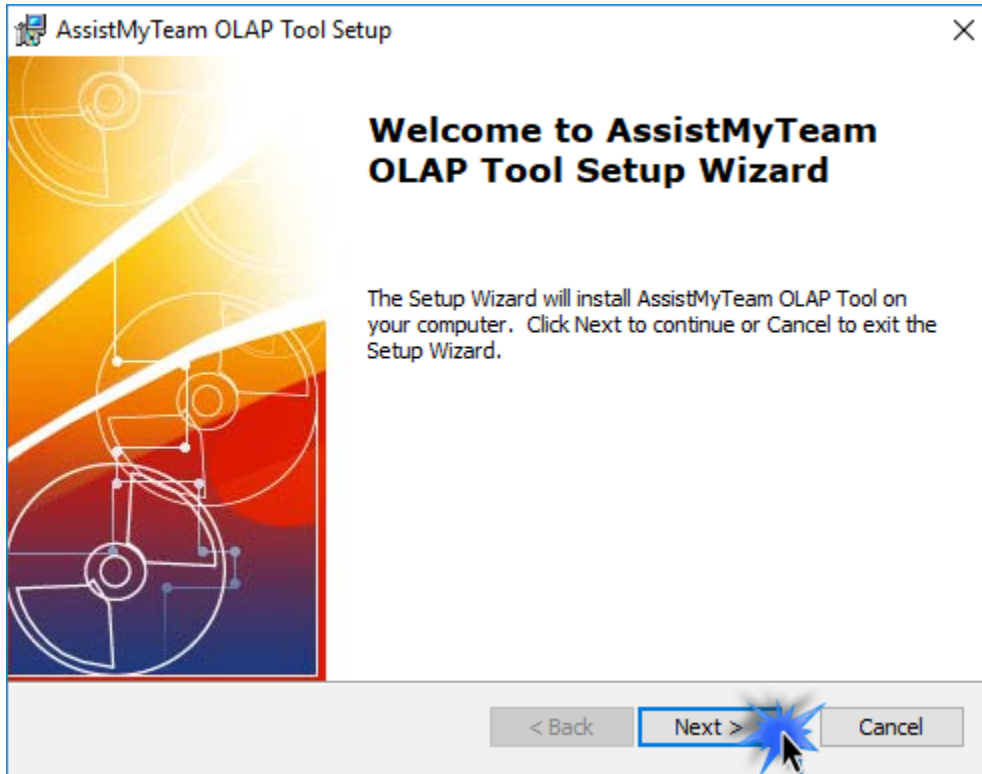
SharePoint 2010 or Higher. Cloud-based SharePoint such as Office 365 are also supported.

Microsoft 365 Access Runtime

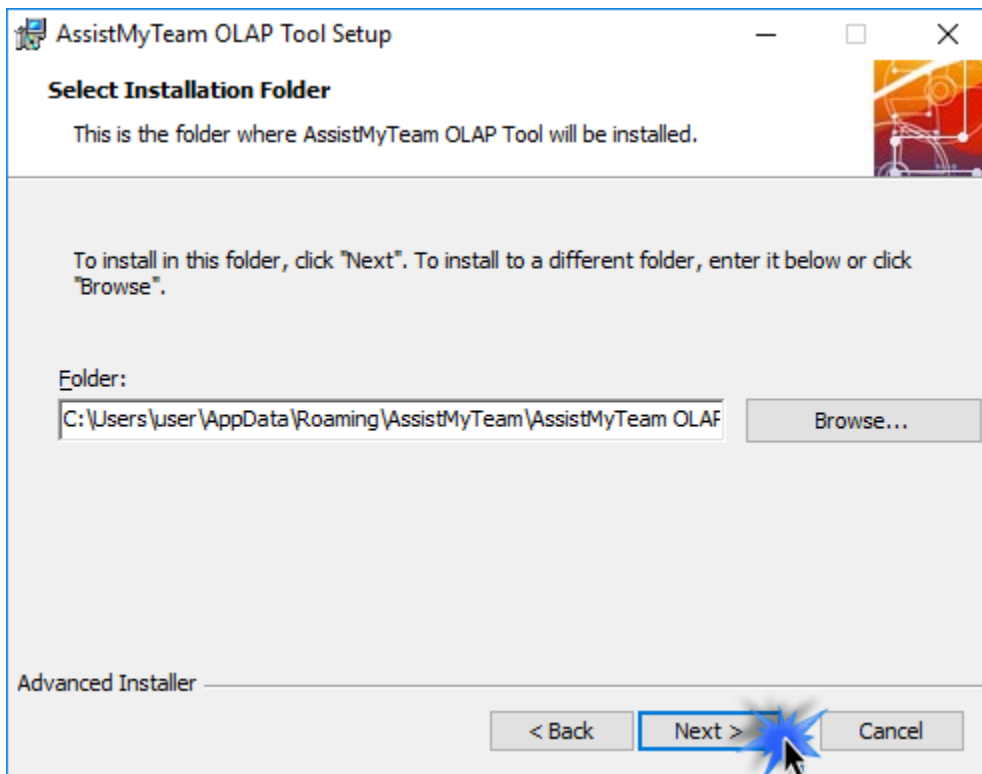
Download link - <https://support.microsoft.com/en-us/office/download-and-install-microsoft-365-access-runtime-185c5a32-8ba9-491e-ac76-91cbe3ea09c9>

Install Steps

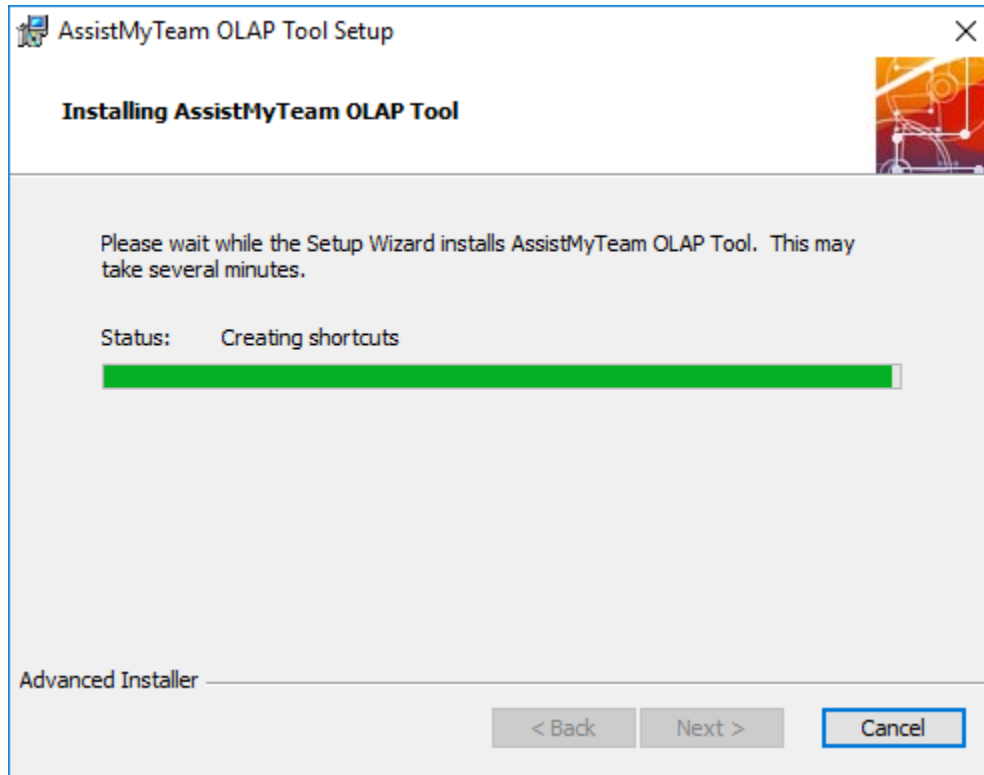
Step 1. Run the *OlapSharePointSetup.exe* to start the installation. Click '**Next**' to Continue.



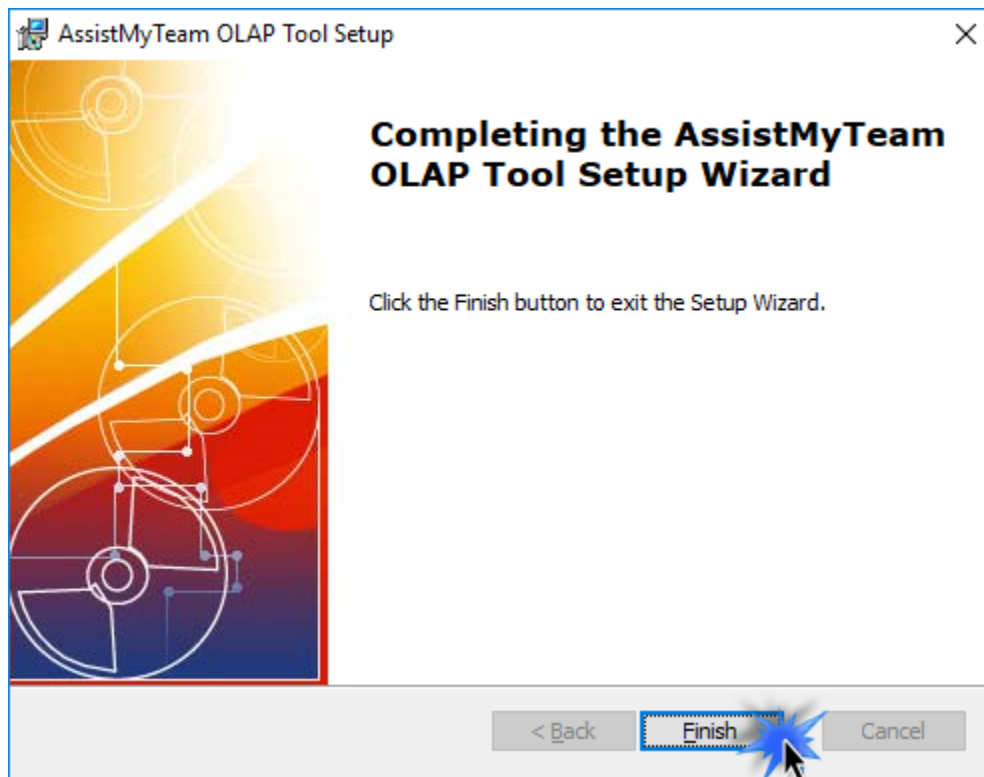
Step 2. Select the appropriate destination folder where the application files will be installed. If you change the default folder path, please make sure you have appropriate permission.



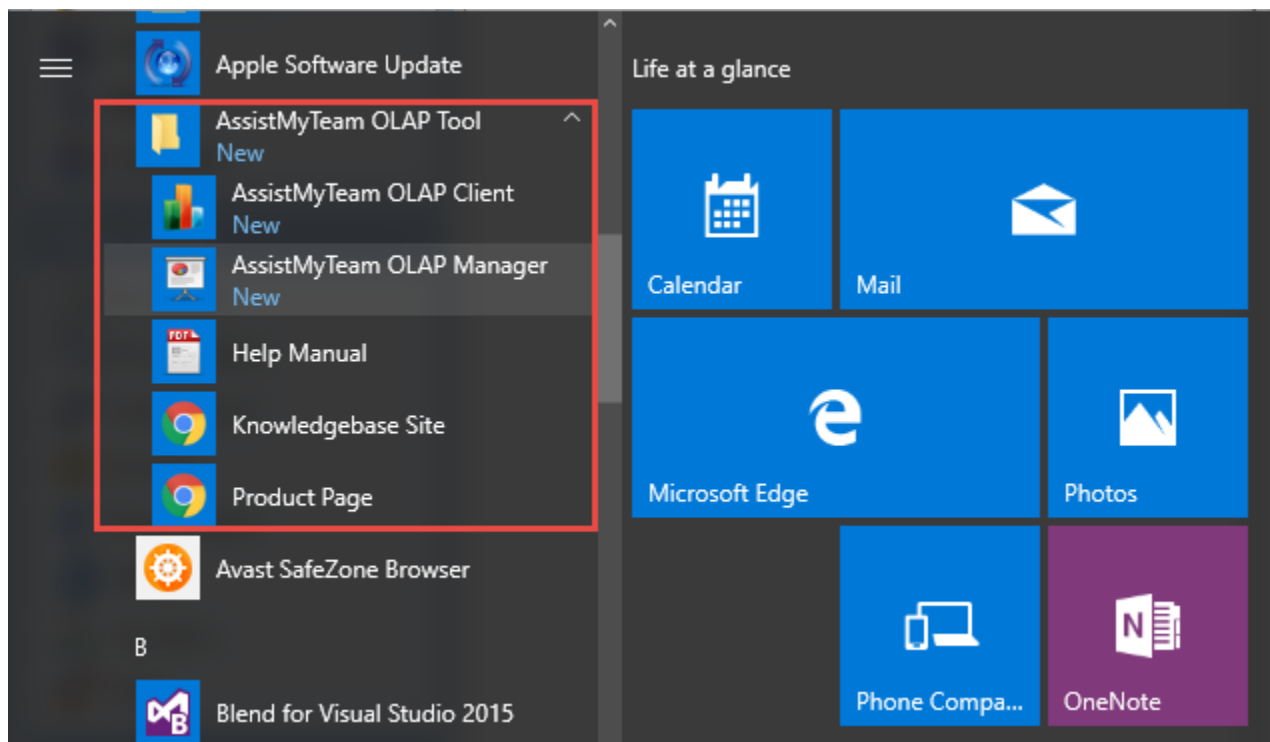
Step 3. It just takes a few minutes to complete the whole copying process



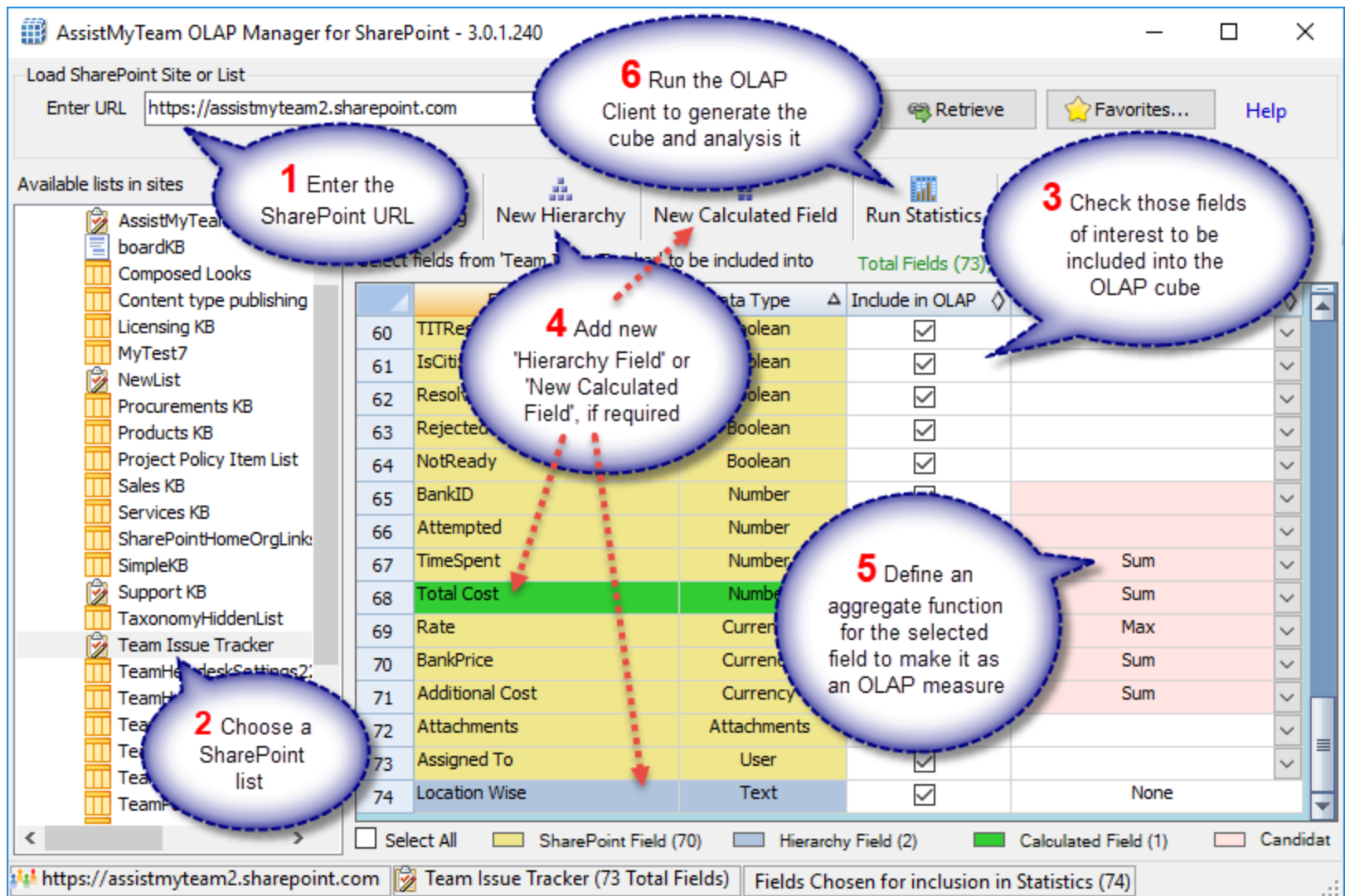
Step 4. Click 'Finish'. This ends the files installation process in your system.



Now go to **Start Menu > All Apps**. If the installation was successful, you will see new menu entry '**AssistMyTeam OLAP for SharePoint**'.

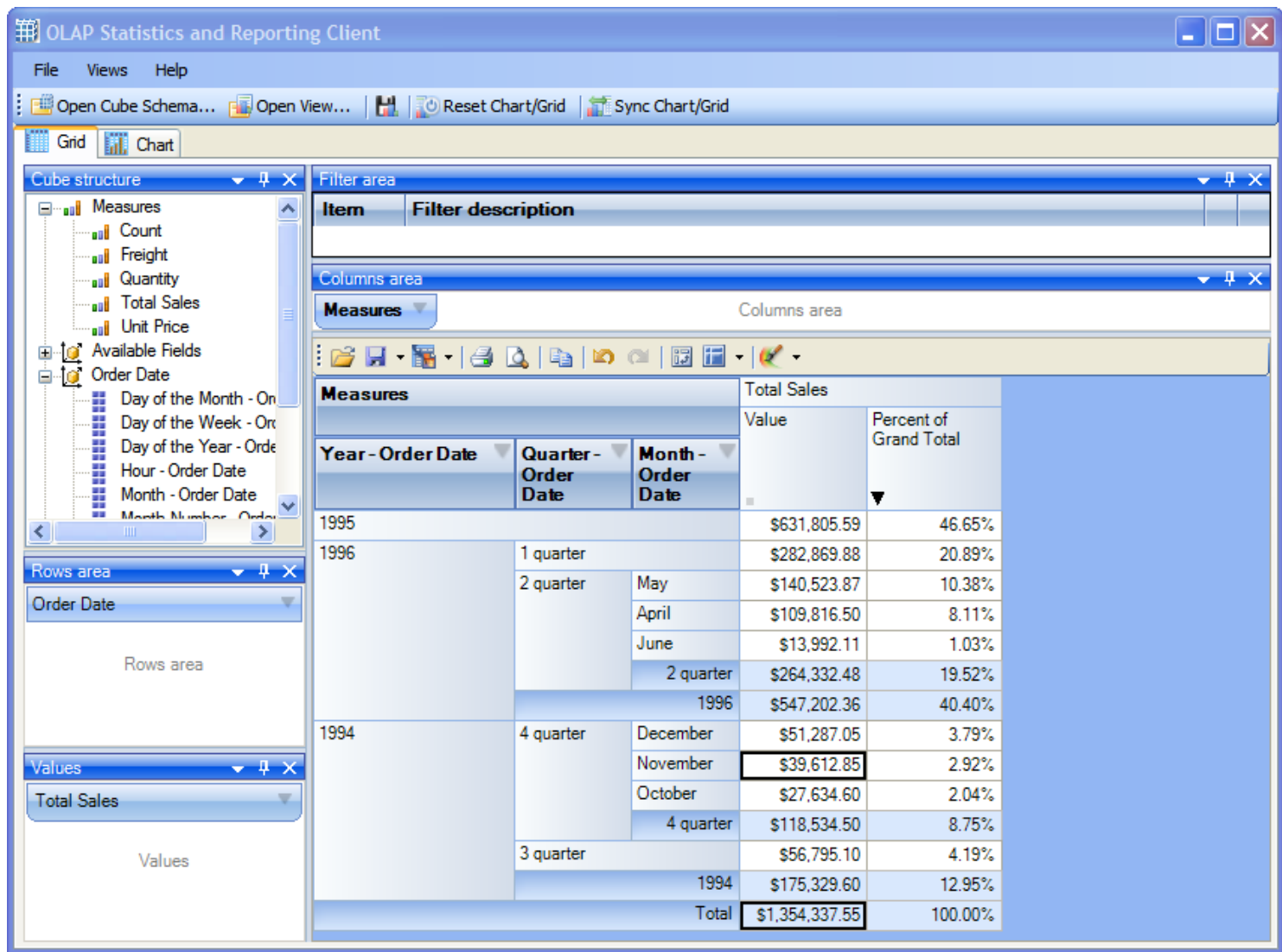


To start creating OLAP configuration and cube from SharePoint, click '**AssistMyTeam OLAP Manager**' from the menu (above).



Once a configuration is achieved, click '**Run Statistics**' from the toolbar of the OLAP Manager tool. This will load the configured OLAP cube in the **OLAP Statistics tool**.

The AssistMyTeam OLAP Statistics tool is the main interface for analyzing the cube and generating reports. This tool consists of the Grid and Chart views with a high level of customizable user interface and interaction.



For more references and help, refer to the PDF Help Manual, which can be invoke from **Start Menu > All Apps > AssistMyTeam OLAP Tool > Help Manual**.

You can also download the full PDF help manual directly from this link:

<https://www.assistmyteam.com/downloads/manuals/AssistMyTeamOLAPSharePointHelp.pdf>

---- End of Install Guide